



Jimmy Hitch™ Easy Installation Instructions

Included:

Jimmy Hitch™ Coupler

9/16" nut

9/16" lock washer

Jimmy Ball™ for 3/8" diameter hole

3/8" lock washer

3/8" nut

3/8" washer

Safety Pin

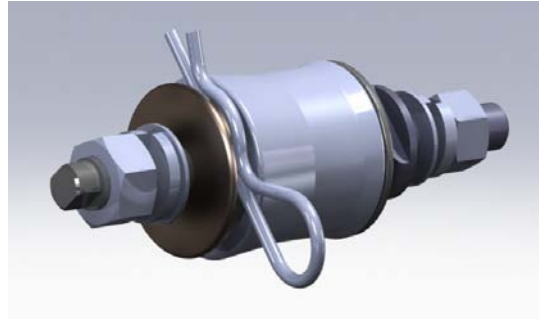
Tools Needed:

3/8" wrench

9/16" wrench

3/4" wrench

7/8" wrench



Check the condition of the receiver hole in the garden tractor or ATV (or other implement). If burrs exist, remove them with a file so that the mounting surface is smooth on both sides of the plate.

Determine the height requirement of the attachment tongue to the tractor. Most garden tractors or ATV's are low enough so that the Jimmy Hitch™ can be installed directly. Contact us for a Jimmy Drop Hitch accessory if further height adjustments are needed at www.jimmyhitch.com.

Suggested installation:

1. Mount the Jimmy Hitch™ face up on the tractor mounting plate using the 9/16" lock washer and 9/16" hex nut. While threading the 9/16" nut onto the shaft you will also need a 3/8" wrench to hold bottom of shaft from spinning and to obtain 50 lbs. of torque.
2. Prior to installing your Jimmy Ball™ you will need to determine the size of hole on your accessory. Included in your Jimmy Hitch™ package is a 3/8" shaft Jimmy Ball for attachments with 3/8" hole or larger.
3. Some garden attachments have tongues with an upper bracket and lower beam. Remove the upper bracket, as it is no longer needed.
4. To install your Jimmy Ball™, line ball up with attachment hole, ball down, shaft up, slide 3/8" flat washer, then 3/8" lock washer onto shaft then thread 3/8" nut onto shaft then tighten to 50lbs torque with 9/16" wrench while holding notches on ball side with a 3/4" wrench.

Required maintenance and upkeep – Failure to comply with the following maintenance guidelines could result in unsafe damage or wear to your Jimmy Hitch™.

1. Regularly lubricate the stainless steel balls to minimize wear inside the coupling.
2. Keep Jimmy Hitch™ completely clean of hazardous materials, including but not limited to caustic chemicals, corrosives and fertilizers.
3. If Jimmy Hitch™ becomes filled with water or liquid, do not allow freezing to occur. Immediately discontinue use, then empty and dry Jimmy Hitch™ components.
4. Exposure to conditions such as winter weather, rock salt and snow melt will damage Jimmy Hitch™. Keep Jimmy Hitch™ clean of these and accumulated snow.
5. When not in use keep Jimmy Hitch™ in a sheltered environment, away from weather conditions that can cause unsafe damage, wear or corrosion.
6. Keep your Jimmy Hitch™ and Jimmy Balls™ nuts tight at all times. Inspect regularly.

Owner and Users responsibilities

Since use of the information contained in your Jimmy Hitch™ product documentation, including this document and the conditions by which Jimmy Hitch™ is used are beyond the control of Hamer Innovative Products, LLC, it is the obligation of the owner and/or each user of Jimmy Hitch™ to carefully read and understand this document and all other documentation, instruction and manuals supplied with Jimmy Hitch™ and to determine the correct and safe conditions of the use of your Jimmy Hitch™. In addition to the disclaimers and imitation of liability set forth below, in no event may Hamer Innovative Products LLC be held responsible for unsafe installation, inspection, operation and maintenance practices of those employing Jimmy Hitch™.

Limited Warranty

Hamer Innovative Products, LLC ("We" or "Us") warrants to the original consumer purchaser only ("You") that the product will be free from material defects in both material and workmanship for a period of one year, ordinary wear and tear excepted; provided that installation and use of the product is in accordance with product instructions. There are no other warranties, express or implied, including the warranty of merchantability or fitness for a

particular purpose. If the product does not comply with this limited 1 year warranty, your sole and exclusive remedy is that we will replace the product without charge to you and within a reasonable time or, at our option, refund the purchase price. This warranty is not transferable.

Disclaimer of Warranties

Your use of your Jimmy Hitch™ is at your sole risk. Hamer Innovative Products, LLC, provides Jimmy Hitch™ on an “as is” and “as available” basis. Hamer Innovative Products, LLC expressly disclaims, to the maximum extent permitted by applicable law, all warranties of any kind, whether express or implied, including but not limited to the implied warranties, the implied warranties of merchantability, fitness for a particular purpose, or arising by statute or otherwise in law or from a course of dealing or usage of trade. No advice or information, whether oral or written, obtained by you from Hamer Innovative Products, LLC or contained in this document or any of your Jimmy Hitch™ documentation shall create any warranty.

Limitation of Liability

Hamer Innovative Products, LLC shall not be liable for, nor shall you make any claim for (whether based on contract, tort, products liability, strict or statutory liability, negligence or otherwise), any direct, indirect, incidental, special, consequential, punitive, or exemplary damages (even if Hamer Innovative Products LLC has been advised of the possibility of such damages) arising out of use of Jimmy Hitch™ including, but not limited to, damages for economic loss of profits or savings: lost wages; damages to or loss of property; bodily injury; medical payments; pain and suffering; and loss of consortium. In the event that applicable law does not allow the exclusion of warranties stated herein or the limitation of liability stated herein, then you expressly agree that in no event will the liability of Hamer Innovative Products, LLC for any claim for damages hereunder exceed the purchase price paid for your Jimmy Hitch™ unit in controversy.

ATTENTION: READ THIS DOCUMENT BEFORE USING Jimmy Hitch™. THIS DOCUMENT CONTAINS IMPORTANT SAFETY WARNINGS RELATING TO THE USE OF Jimmy Hitch™, DISCLAIMERS AND LIMITATIONS OF THE LIABILITY OF HAMER INNOVATIVE PRODUCTS, LLC. FAILURE TO OBSERVE THE SAFETY WARNINGS CONTAINED IN THIS DOCUMENT MAY RESULT IN DAMAGE TO PROPERTY, SERIOUS BODILY INJURY, OR DEATH. BY USING Jimmy Hitch™ YOU ACKNOWLEDGE THAT (1) YOU HAVE READ THIS DOCUMENT, (2) YOU UNDERSTAND IT, (3) YOU UNCONDITIONALLY AGREE TO USE Jimmy Hitch™ IN STRICT ACCORDANCE WITH THE SAFETY WARNINGS HEREIN, AND (4) YOU UNCONDITIONALLY ACCEPT AND AGREE TO BE BOUND BY THE DISCLAIMERS AND LIMITATIONS OF ALL REQUIREMENTS SET FORTH IN THIS AND OTHER Jimmy Hitch™ DOCUMENTATION.

Prior to the Installation and First Use:

Read this document and all other documentation, instructions, and manuals supplied with your Jimmy Hitch™. Jimmy Hitch™ must be installed in the manner described in your Jimmy Hitch™ instructions and must be used in the manner specified in the product documentation.

Regular Inspection:

Inspect Jimmy Hitch™ and all connected hardware, including but not limited to your Jimmy Hitch™ ball and/or cup for damage, wear or improper installation before and after each use. Check all trailer connections before use. DO NOT USE or IMMEDIATELY DISCONTINUE USE of Jimmy Hitch™ if Jimmy Hitch™ of any connected hardware appears to be unsafe, or if you observe any of the following specific conditions:

1. Do not use Jimmy Hitch™ if any ball is missing, worn or damaged.
2. Do not use Jimmy Hitch™ if the threads or any hardware are stripped or damaged.
3. Do not use Jimmy Hitch™ if the stainless balls are damaged or missing.

Prohibited applications:

Jimmy Hitch™ has not been tested for and is not designed for the following uses:

1. Do not use Jimmy Hitch™ for any purpose, including but not limited to towing on any highway or public roadway, whether hard surface or gravel or otherwise.
2. Do not use Jimmy Hitch™ for lifting or pulling human cargo of any kind.
3. Do not use Jimmy Hitch™ for hoisting any loads above the ground.
4. Do not use Jimmy Hitch™ for any truck, van, or any other vehicle that is rated by the US Department of Transportation as authorized for use on highways or public roadways.
5. Do not use Jimmy Hitch™ in any application that exceeds 1000 pounds of maximum load limit.
6. Do not use Jimmy Hitch™ as a second or third ball for any application.
7. Do not use Jimmy Hitch™ for underwater use.
8. Do not use Jimmy Hitch™ to pull explosive or hazardous materials or in any environment in which explosive or hazardous materials are present.
9. Do not use Jimmy Hitch™ to conduct electricity for grounding.
10. Do not use Jimmy Hitch™ for high-speed rotational applications.

Other Safety Requirements:

1. Stay clear of all objects released under load.
2. Do not wrap any safety chains around Jimmy Hitch™. Safety chains can unsafely damage Jimmy Hitch™.
3. If Jimmy Hitch™ is exposed to mud or sand; do not sue Jimmy Hitch™ until all mud or sand has been thoroughly cleaned from Jimmy Hitch™ and all other hardware.
4. Do not pound or beat Jimmy Hitch™ as unsafe damage could occur.
5. Do not modify Jimmy Hitch™ or any of its components.
6. Do not use Jimmy Hitch™ on any manner or application that violates any federal, state or local law.